



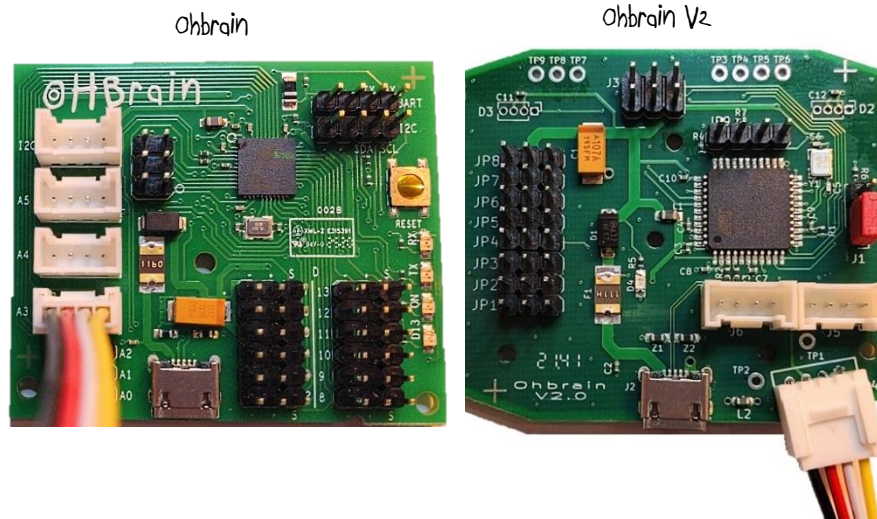
Sensor pack Instructions

The pack contains three sensors that can be used to give your Ohbot the ability to sense light, touch and tilt.

The sensors connect to the Ohbrain board via the white sockets.

Touch Sensor

Connect the other end of the cable to the socket shown on the Ohbrain



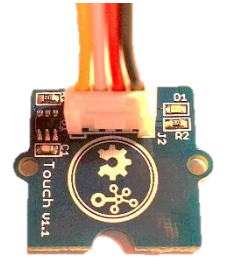
In the Ohbot software on the sensing menu find the block shown below



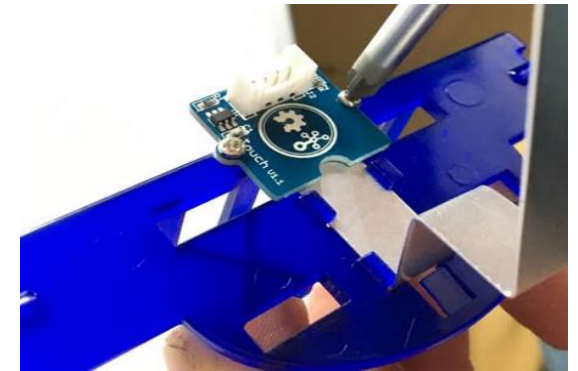
put a tick in the box next to the sensor block to display its value.

As you touch the sensor you should see the value change from false to true.

This sensor only gives a value of false or true. It does not give a measure of the amount of touch, only if the sensor is touched or not touched.

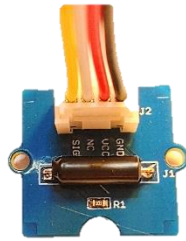


It is possible to attach the touch sensor to the rear of the jaw over the base of Ohbot's nose. This will make Ohbot's nose touch sensitive.



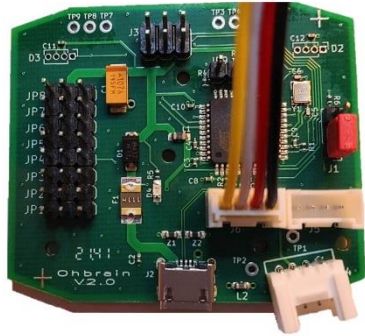
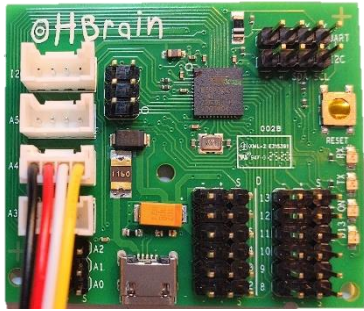
Tilt Sensor

Connect the loose plug to the socket shown on the Ohbrain



Ohbrain

Ohbrain V2



In the Ohbot software on the sensing menu find the block shown below.

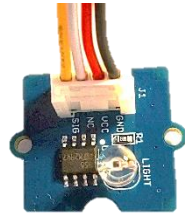


put a tick in the box next to the sensor block to display its value.

As you tilt the sensor you should see the value change from false to true. This sensor does not give a measure of the amount of tilt only if the sensor is tilted or not tilted.

Light Sensor

Connect the other end of the cable to socket shown on the Ohbrain



Ohbrain

Ohbrain V2



In the Ohbot software on the sensing menu find the block shown below.



put a tick in the box next to the sensor block to display its value.

As you cover over the sensor you should see the value change. The light sensor gives a value based on the intensity of the light. The brighter the light the higher the value.

About

Ohbot Ltd. Halliday's Mill, London Road, Chalford, Gloucestershire.

Ohbot is a registered Trademark of Ohbot Ltd.

All parts are RoHS compliant

